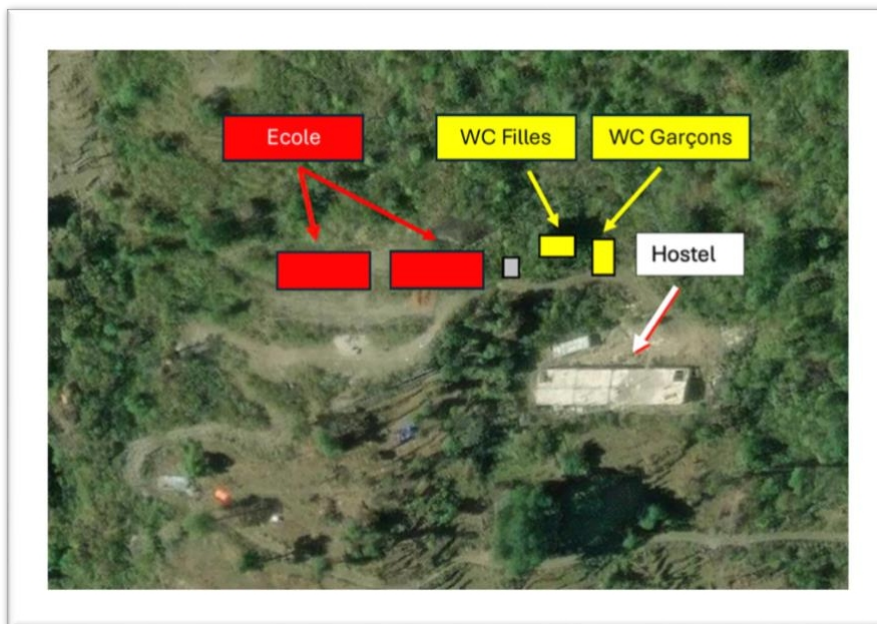




Namaste Gumda Switzerland Non-profit-making association recognised as being in the public interest

Project to build two toilet blocks at Lapubesi secondary school



Author Alain Pipoz Chairman Namasté Gumda - February 2025

Association Namaste Gumda - Rte de Céligny 58 - CH 1298 Céligny - Switzerland
Tel.0041796488485 contact@namastegumda.com - www.namastegumda.com
IBAN CH72 0900 0000 1419 7173 6

Table of contents

- Table of contents2
- 1 Introduction3
- 2 Values, aims and objectives of association4
 - 2.1 Values.....4
 - 2.2 Goal4
 - 2.3 Objective.....4
- 3 Situation4
 - 3.1 Issues5
 - 3.2 What we do5
- 4 The project6
 - 4.1 Request6
 - 4.2 Aim of the project.....6
 - 4.3 Authorisation7
 - 4.4 Study7
 - 4.5 Construction.....7
 - 4.6 Analysis of the project's strengths and weaknesses8
 - 4.7 Construction budget.....9
 - 4.8 Financing plan.....10
 - 4.9 Payment of funds10
 - 4.10 Project duration10
 - 4.11 Carrying out the work.....11
 - 4.12 Project follow-up12
 - 4.13 Recommendation12
- 5 Conclusion.....13
- 6 Table of appendices14

1 Introduction

Namaste Gumda, a Swiss non-profit organisation, was founded in 2015 following the devastating earthquake in Nepal. Based in Céligny, in the canton of Geneva, we are committed to improving the lives of local people by meeting their infrastructure, education and health needs. The Lapubesi project is fully in line with our mission. We are working to transform the quality of life for children in a small village nestling in the foothills of the Himalayas, by funding the construction of two separate sanitary buildings for boys and girls at the local secondary school.

Lapubesi is a remote village in Nepal, surrounded by majestic scenery, but facing significant socio-economic challenges. The region, while rich in natural beauty and cultural heritage, is marked by a series of geopolitical constraints that complicate its development.



Nepal, landlocked between China and India, two major powers

economic and political, has a unique geopolitical position. This has a major influence on the country's internal economic and political dynamics. Because of its geographical isolation, rural areas such as Lapubesi are often overlooked in national development plans. Basic infrastructure, such as roads, drinking water and health services, is often inadequate or non-existent.

The village of Lapubesi is also affected by the recurrent political instability in Nepal. Frequent changes of government and internal conflicts have led to a fragmentation of public policies and an unequal distribution of resources. This instability makes it difficult to implement sustainable development projects, exacerbating the challenges faced by the people of Lapubesi.

In addition, the region is often prone to natural disasters, such as earthquakes and landslides, which further exacerbate the precarious living conditions of the inhabitants. Rebuilding after 2015 earthquake was a long and difficult process, and many communities, such as Lapubesi, are still recovering from its devastating effects.

These geopolitical and socio-economic challenges make targeted, well-thought-out interventions, such as those proposed by Namaste Gumda, all the more essential. By working the local authorities and mobilising international resources, our association is striving to overcome these obstacles and offer sustainable solutions tailored to the specific needs of the people of Lapubesi.

The government has managed to build a secondary school for the 450 pupils at Lapubesi, but unfortunately it does not have the financial resources to build adequate sanitary facilities. Without proper toilets, the pupils have to cope with unsanitary conditions that increase the risk of disease and damage their general well-being. That's where we come in with this toilet construction project, which has multiple motivations and is of crucial importance.

2 Values, aims and objectives of the association

2.1 Values

Namaste Gumda is convinced that all human beings have the right to a minimum standard of living. We defend the principle of distributing the world's wealth, reducing poverty and ensuring access to education and health.

It is vital for us to involve the beneficiary populations in the development process and in the implementation of our projects, because by involving them they will feel fully concerned. We want the men and women of the community to be responsible in the majority of cases for evaluating, deciding on and managing the projects we fund.

2.2 Goal

Our primary aim is to respond to the needs of the local population in Nepal and to provide support for infrastructure, educational and social projects.

Nepal is home to many NGOs from westernised countries, and coordinating them is no easy task. For this reason, we are establishing numerous contacts with them, in order to avoid the risk of duplication as much as possible.

Although the political situation in Nepal is difficult and liable to change rapidly, it is important for us, when necessary, to obtain the acceptance and authorisation of the local authorities, as without their consent our long-term action would be compromised.

To support us in these endeavours, we can count on the help and commitment of our local partners, who are fully aware of the needs and coordinate our activities on site.

2.3 Objective

Our aim is to improve social life and infrastructure in the villages. To achieve this, we carry out projects related to family and public life, education and health. Each project we finance must meet criteria such as usefulness, costs, deadlines and follow-up, to name but the main ones. They must also correspond to a real need and provide added value for the people and the community.

Requests from our local partners are analysed and approved by the association's committee. If they meet our criteria, the project process is launched.

3 Situation

The Lapubesi village secondary school is located in the municipality of Darche 7, in the Gorkha district. The government financed the construction of the school buildings, which still under construction at beginning of 2025. Unfortunately, it has already informed the local authorities that it does not have the necessary budget for the ancillary buildings, in particular the toilets for the school's 450 pupils and teachers.

The project we are committed to is the construction of two buildings to house sanitary facilities for the school, improving hygiene conditions and creating a safer school environment. This will encourage attendance by providing more dignified and comfortable living and learning conditions.

3.1 Issues

The Lapubesi school, currently under construction in a rural area of the Darche 7 commune, has not yet welcomed any children due to the total absence of toilets. This situation creates precarious hygiene conditions and poses high health risks for future pupils. The local government's limited budget prevents it from funding the necessary improvements, further complicating the situation. To meet this urgent need, the project proposes the construction of two modern toilet blocks adapted to the school's needs. The installation of these sanitary facilities is essential for a number of reasons: **hygiene and health**, as they reduce the risk of illness and infection; **safety**, as they prevent children from wandering away from school; dignity and comfort,



Lapubesi school

by offering a more acceptable school experience; **school attendance**, by encouraging parents to send their children to school; and **the longevity of the infrastructure**, by providing a lasting solution to the school's health problems. The new facilities will improve hygiene conditions and create a safer, healthier school environment. The project will also encourage school attendance by providing more dignified and comfortable living and learning conditions for pupils.

3.2 Our action

Namaste Gumda is playing a crucial role in this project to build toilets for the Lapubesi school. Our association specialises in community development and improving living conditions, and we are bringing our experience and resources to bear on the project. Namaste Gumda is working with local stakeholders to draw up a detailed plan for the construction of the toilets, and a local engineer has been commissioned to define the appropriate site selection, the design of the structures and coordination with the workers. We have primary responsibility for raising the necessary funds, including fund-raising, grant-seeking and partnerships other organisations. Namaste Gumda will oversee the progress of construction work to ensure that it is completed to standard and on time, while guaranteeing efficient and transparent use of resources. In addition, we will conduct awareness-raising activities with the school community and parents on the importance of sanitary facilities, and we will educate the community on the use and maintenance of the new facilities.

4 The project

4.1 Request

In April 2024, we received an official letter from the headmaster of Lapubesi school detailing an urgent and worrying situation. The government had recently begun construction of the school, a project long awaited by the community. However, it soon became clear that the budget allocated to the project did not cover the construction of sanitation facilities, which are essential to ensure a safe and healthy school environment.

The headmaster explained that without toilets, hygiene and safety conditions would be seriously compromised, directly affecting the health and well-being of pupils and staff. There would be an increased risk of infection and illness, which could also lead to high levels of absenteeism and a reduction in the quality of learning.

with this critical situation, the headmaster asked for our support finding a solution the lack of funding. He hoped that we could mobilise resources, whether in the form of donations, grants or partnerships with non-governmental organisations, to ensure that the toilets could be built on schedule. The objective was clear: to provide the pupils and staff of Lapubesi school with an environment conducive to education, where the hygiene and dignity of each individual would be respected.

4.2 project objective

The main aim of the project is to ensure the construction of sanitary facilities at the Lapubesi school in order to guarantee optimum hygiene and safety for pupils and staff. More specifically, the project aims to

- Build modern, adapted toilets: provide sufficient high-quality sanitary facilities to meet the needs of all pupils and staff.
- Promoting health and well-being: reducing the risk infections and illnesses linked to poor hygiene, thereby helping to improve the overall health the school community.
- school attendance and success: providing a healthy environment that respects the dignity of each individual, which can improve school attendance and academic performance.
- Supporting gender equality: ensuring that sanitary facilities are accessible and suitable for all, including specific toilets for girls, in order to promote equal opportunities and inclusion.
- Mobilising and raising community awareness: encouraging the participation and cooperation of different stakeholders (government, NGOs, donors) to ensure the success and sustainability of the project.

In short, this project aims to create an educational environment that is safe and conducive to learning, while respecting the dignity and health of every member of the Lapubesi school community.

4.3 Authorisation

As with every project, we obtain the approval of the relevant government authorities. For this project, the authorities of Darche 7, which groups together several villages, including Lapubesi, sent us the necessary documents, duly signed. Once this crucial stage had been completed, the Namasté Gumda committee validated this essential condition enabling the project to be launched in compliance with local regulations and with the support of the community. (Appendix 1)

4.4 Study

A local engineering has carried out a study of the project and will act as project during the construction .

works. The estimate includes the construction of the two buildings, the construction of septic systems and the necessary improvements, as well as building plans. The work will be carried out by qualified staff, assisted by local residents under supervision of the engineer. The engineering , with its expertise and knowledge will ensure that it is installed efficiently and in compliance with current standards. The buildings will be solid and functional, with essential sanitary facilities. Septic tanks will be designed to ensure efficient and hygienic management of wastewater. The works will include electricity, plumbing, connections existing networks, and the additional infrastructure needed ensure sanitation facilities. Collaboration with the residents of the will help to strengthen the sense of involvement and responsibility within . the community. A full description of the project in English, including all the planned stages materials to be used and timetables, is set out Appendix 3: Original Study .

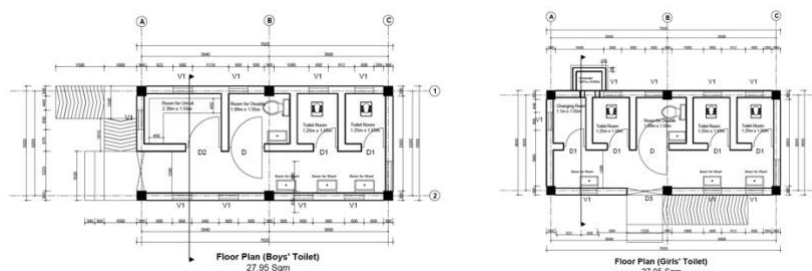
4.5 Construction

The construction of the building will include a solid concrete slab to provide a stable and durable base. The walls will be built using high-quality bricks, providing both strength and insulation. The roof will also be a concrete slab, ensuring effective protection against the elements and long-term durability.

In the boys' building, there will be 2 Turkish toilets, a seated toilet, 4 washbasins lined up along one wall, as well a spacious changing room for changing clothes and storing personal belongings.

In the girls' section, there will be 3 Turkish toilets, a seated toilet, 3 washbasins also in a row, as well as a room dedicated to feminine hygiene, equipped with everything needed to meet the specific needs of young girls.

This design aims to ensure optimal sanitary conditions for all students, taking into account the specific needs of each group and guaranteeing comfort and dignity.



4.6 Analysis of the strengths and weaknesses of the project

We felt it was essential to carry out an in-depth analysis of the project's strengths and weaknesses in order to take all aspects fully into account.

The aim of this analysis is identify the strengths of the project that can be developed and exploited to ensure its success, as well as the potential weaknesses or challenges that could hinder its completion. By carrying out this assessment, we can anticipate difficulties and put in place strategies to overcome them.

This methodical and proactive approach ensures that all elements of the project are considered, enabling effective implementation and better management of resources and risks. It also gives us a solid basis for measuring and evaluating progress throughout the project, and for adjusting our planning if necessary to ensure its success.

Forces	Weaknesses
<ul style="list-style-type: none"> - Well-suited geographical location - Willingness of the local population - Active participation by villagers - Recognised and competent local engineering firm - Involvement of the local economy (transport, accommodation) - Improving hygiene and health conditions 	<ul style="list-style-type: none"> - No financial aid from Nepalese government - Difficulty in obtaining financing - Difficulty communicating with our local partners - Difficulty keeping track of work progress
Opportunities	Threats
<ul style="list-style-type: none"> - Development and training aid - Access to health infrastructure - Closer ties between Nepal and Switzerland 	<ul style="list-style-type: none"> - Project blocked by the government - Political instability - Supply problems - Environmental risks (landslides, monsoons) - Loss of local partners - Fluctuating exchange rates

The analysis highlights usefulness and importance of the project. It shows that the installation of modern, appropriate sanitary facilities in the Lapubesi school is essential to improving the health and hygiene conditions pupils and staff. It also emphasises that this project is helping to create a school environment that is conducive to learning and academic success.

Although some challenges exist, they do not compromise the completion of the project. Thanks to proactive management and close collaboration between all stakeholders, the project can be completed successfully, bringing lasting benefits to the Lapubesi community. In summary, this analysis confirms that the benefits of the project far outweigh the risks, and that its implementation is not only feasible, but also necessary and appropriate. beneficial.

4.7 Budget for construction

The tender provides for a construction cost of NPR 5,481,962, equivalent to CHF 36,792 at the exchange rate of 1 February 2025.

Bank charges and unforeseen events also need to be taken into account! In the past we have seen major fluctuations in exchange rates that can affect project costs. Weather conditions and the political situation can also play a significant role, particularly in the supply of building materials.

For this reason, we are taking into account a variation in the cost of the project of +/- 15%, as well as costs totalling CHF 1,050, including bank charges, local taxes and the costs of on-site visits by our correspondents.

The total budget for the project, including all items, is CHF 43,078.

Details of construction costs

Positions	NPR costs	Cost CHF
Earthworks	226 161 NPR	CHF 1,518
Structural work	1,925,080 NPR	CHF 12,920
Masonry	1 321 569 NPR	CHF 8,870
Doors and windows	334 350 NPR	CHF 2,244
Tiling	174,361 NPR	CHF 1,170
Plasterwork	269,039 NPR	CHF 1,806
Paint	111,913 NPR	751 CHF
Sanitary	316 720 NPR	CHF 2,126
Electricity	100 083 NPR	672 CHF
Miscellaneous	72,000 NPR	483 CHF
VAT	630,686 NPR	CHF 4 233
Subtotal 1	5,481,962 NPR	CHF 36,792
Expenses, administration, follow-up, site visits		CHF 1,050
Total requirements		CHF 37,842

If the exchange rate remains stable, the total cost of the work will be CHF 37,842. However, we have found in the past that this can fluctuate considerably, with variations of up to 15%, or around +/- CHF 5,500.

4.8 financing plan

Financing remains the most important aspect of our projects. We are in a position to contribute CHF 10,000 of our own funds, mainly due to the gain we made on the exchange rate for our WC project in Birgunj.

Our other sources of funding come from private and institutional donors. Based on our past experience, we can draw up the following financing plan.

Positions		Cost CHF
Equity at 1 March 2025		CHF 10,000
Special donations		CHF 2,000
Public donations		CHF 5,000
Corporate donations		CHF 3,000
Foundation donations		CHF 18,000
Total revenue		CHF 38,000

4.9 Payment of funds

In order to comply with Nepal's banking guidelines, it is necessary make instalments. Maximum instalments of CHF 10,000 will be paid at regular intervals throughout the project. Each instalment will be used to finance the various construction phases, thus ensuring the continuity of the work without interruption.

These regular payments will be carefully planned and monitored to ensure rigorous and transparent financial management. The balance of the total amount will be paid on completion of the work, following an inspection visit by our local representative. This visit will verify that all stages of the project have been completed in accordance with established requirements and standards.

This staggered payment process allows us to manage finances efficiently, while ensuring compliance with Nepalese banking regulations and minimising the financial risks associated possible exchange rate fluctuations or unforeseen events. Dividing the payments into several instalments also offers greater flexibility and means that the funding can be adapted according to the actual progress of the project.

By following this approach, we can ensure that the project runs smoothly, within budgetary and regulatory constraints, while guaranteeing the quality and sustainability of the health infrastructure installed.

4.10 Duration of project

It is difficult to plan the exact duration of the project, as this is directly linked to the donations we receive. variability and uncertainty of financial contributions make it complex to project a precise timetable. Nevertheless, we have drawn up a preliminary roadmap based on reasonable funding assumptions and past experience of similar projects.

We hope to start the project in spring 2025. This period has been chosen because of the favourable weather conditions that will allow construction work to start efficiently. The first phase will involve preparing the site, mobilising the construction teams and laying the concrete foundations.

The progress of the work will then depend on the regularity of donations and instalments. If the contributions are received according to our forecasts, the next stages will include the erection of the brick walls, the construction of the septic tanks and the installation of the sanitary infrastructure and equipment. Each stage will be supervised by the local engineering office to ensure compliance with quality and safety standards.

We anticipated that the project could be completed by the end of 2025, subject to continued and sufficient funding. However, we remain flexible and ready to adjust the timetable according to the realities on the ground and any unforeseen circumstances. A visit by our local representative at the end of the works will allow us to validate the completion and compliance of all the installations, before proceeding with payment of the final balance.

In summary, while we are aware of the uncertainties associated with funding, we have put in place a realistic and adaptable project plan that will enable us to start work in spring 2025 and aim for completion by the end of 2025, while guaranteeing the quality and sustainability of the health infrastructure for the Lapubesi school.

4.11 works

The work will be supervised by a local engineer, will be responsible for coordinating all construction operations. The engineer will work closely with skilled workers and villagers to ensure that the project is completed efficiently and to standard.

Not all the skilled workers, essential to the smooth running of the works, are from the region. Some of them come from very distant districts and are itinerant, particularly the bricklayers. Their expertise is crucial for specific tasks such as laying concrete foundations, raising brick walls and building septic tanks.

At the same time, a number of skilled workers from the village have special skills, such as carpentry. Their participation ensures that finishing and work, such as the installation of doors, windows and sanitary fittings, is carried out with care and precision.

Local people will also play a key role as unskilled labourers. They will be hired to carry out simple tasks that do not require specific technical knowledge, such as transporting materials, preparing work sites and providing general assistance to skilled workers. Their active involvement in the project is not only beneficial in speeding up the construction process, but also reinforces the sense of ownership and collective responsibility for the project. This collaboration between the engineer, the skilled workers and the villagers is essential ensure the success of the project. It combines technical skills, local expertise community involvement, ensuring a high-quality, sustainable construction tailored to the specific needs of the Lapubesi school.

4.12 Follow-up project

Constant monitoring of the project's progress is imperative to ensure its success. Our local partners and representatives will play a crucial role by regularly reporting to us on the activities carried out in the field. They will be required to provide detailed reports, including photographs of work in progress, to the President Namaste Gumda at least twice a month.



Visit to the village during our trip in 2022

These reports will serve as a basis for informing our members and funders of the project's progress. At regular intervals, we will publish these updates on our website and in our newsletters, ensuring total transparency and smooth communication with all stakeholders.

In addition, a site visit is scheduled for end of 2025. This visit, we will personally check that the work is being carried out properly and that the project is meeting the quality standards and deadlines set. This final inspection will validate the completion of the project and settle the final details before the work is officially closed.

Thanks to this rigorous monitoring and transparent communication, we will strengthen the confidence and involvement of our partners and , while ensuring the success and sustainability of the project.

4.13 Recommendation

After a careful analysis of all the elements in its possession, the Namaste Gumda committee decided to approve the project. The committee took into account the urgent needs of the community, the importance of sanitation facilities to the health and well-being of the students, and the potential challenges. Based on this assessment, the committee concluded that the project is not only necessary, but also feasible.

To ensure rigorous monitoring and proper execution of the project, the committee has appointed a chairman. The Chairman will be responsible for overseeing all stages of the project, from planning and mobilising resources to completing the work and handing over the facilities. The chairman will work closely with local partners, community representatives, skilled workers and the engineer in charge to ensure that the project progresses according to plan and to the established requirements.



The village of Lapubesi

5 Conclusion

The project to build two sanitary buildings for the Lapubesi secondary school represents a crucial step towards improving living and learning conditions for pupils. Faced with geopolitical, socio-economic and natural challenges, the inhabitants of this remote village in Nepal deserve basic infrastructure that ensures their hygiene, safety and dignity.

Through its values and commitment, Namaste Gumda has demonstrated its ability to meet the essential needs of this community by mobilising international resources and working closely with the local authorities. The construction of the toilets, much more than a simple infrastructure project, symbolises a collective effort to promote public health, equal opportunities and sustainable development.

By investing in this project, we are not only helping to provide a healthier school environment conducive to education, but also strengthening the ties between Nepal and Switzerland. The active participation of the local community in carrying out the work bears witness to their desire and determination to improve their daily lives.

We are convinced that this project will bear fruit and that it will inspire other similar initiatives, because every action in favour of education and health is a milestone on the road to a better future. Together, let's continue to work for a fairer, more caring world.

6 Table of appendices

1. Statutes Namaste Gumda
2. Darche's request for authority 7
3. Quote
4. Building plans



Namasté Gumda Switzerland Non-profit association recognised as being in the public interest

Project to build two toilet blocks at Lapubesi secondary school

Appendix 1

Statutes Namaste Gumda



STATUS OF THE "NAMASTE GUMDA" ASSOCIATION

ARTICLE 1 NAME

"NAMASTE GUMDA" is a non-profit association governed by these Articles of Association and, subsidiarily, by Articles 80 et seq. of the Swiss [Civil Code](#). It is politically neutral and denominationally independent.

ARTICLE 2 HEADQUARTERS

The association's head office is located in the Canton of Geneva at Namaste

Gumda.
C/o Alain & Nicole Pipoz
Rte de Céligny 58
1298 Céligny
Switzerland

Its duration is indefinite.

ARTICLE 3 AIMS

The association pursues the objective(s):

- To provide material and financial support to the inhabitants and infrastructure of the Gumda region of Nepal in particular and other regions of Nepal in general.
- access to medical care
- Helping children benefit from school resources or programmes
- To work in close collaboration with other organisations, associations or NGOs pursuing the same goal, in order to rapidly encourage the creation of the necessary conditions for health, education and social promotion in this country.
- In all cases, the actions are carried out in consultation with, and with the active participation of, the local population.

ARTICLE 4 RESOURCES

The association's resources come as required:

- Donations and legacies
 - Sponsorship
 - Public and private subsidies
 - Membership fees
 - All other resources authorised by law
- The funds

are used in accordance with the corporate purpose.

ARTICLE 5 MEMBERS

Membership is open to natural or legal persons (who) (have) demonstrated (their) commitment to the aims of the Association through *their* actions and commitments and who provide) it with support in the form of financial, material or moral assistance.

The association is composed of:

- A committee a chairman, treasurer, secretary, one or more members
- Members

Applications for membership shall be submitted to the Committee. The Committee admits new members and informs the General Meeting. Membership is forfeited:

- By death
- By written resignation addressed to the Committee at least six months before the end of the financial year.
- By exclusion pronounced by the Committee, for "just cause", with a right of appeal to the General Meeting. The deadline for appeals is thirty days from notification of the Committee's decision.
Failure to pay contributions for more than one year.

In all cases, the annual membership fee remains payable. Members who resign or are expelled have no right to the company's assets.

The Association's assets alone are liable for the commitments entered into in its name. All personal liability of its members is excluded.

ARTICLE 6 BODIES

The Association's bodies are

- The General Meeting
- The Committee
- The Auditors

ARTICLE 7 GENERAL ASSEMBLY

The General Meeting is the supreme authority of the Association. It is composed of all members. It meets once a year in ordinary session. It may also meet in extraordinary session whenever necessary at the request of the Committee or 1/5th of the members. The General Meeting is validly constituted regardless of the number of members present.

The Committee shall notify members in writing of the date of the General Meeting at least 6 weeks in advance. The notice of meeting, including the agenda, shall be sent by the Committee to each member at least 10 days in advance.

ARTICLE 8 ATTRIBUTIONS OF THE AG

The General Meeting:

- Decides on the admission or exclusion of members
- Elects the members of the Committee and appoints at least a Chairman, a Secretary and a Treasurer
- Takes note of the reports and accounts for year and votes to approve them
- Approves the annual budget
- Oversees the activities of the other bodies, which it may dismiss for just cause

- Appoint auditor(s)
- Sets the annual membership fees
- Decides on any amendments to the Articles of Association
- Decides to dissolve the association

ARTICLE 9 CHAIRMANSHIP OF THE GENERAL MEETING

The General Meeting is chaired by the Chairman of the Association or, in his absence, by a member of the Committee.

ARTICLE 10 DECISION OF THE GENERAL MEETING

Decisions of the General Meeting are taken by a simple majority of the votes cast by the members present. In the event of a tie, the Chairman's vote counts double.

Decisions to amend the Articles of Association or to dissolve the Association may only be taken by a 2/3 majority of the members present.

ARTICLE 11 SCRUTINY

Voting is by show of hands. At the request of at least five members, votes are taken by secret ballot.

ARTICLE 12 AGENDA OF THE GENERAL MEETING

The agenda for the Annual General Meeting, known as the Ordinary General Meeting, must include:

- Approval of the minutes of the last General Meeting
- the Committee's report on Association's activities during the period just ended
- the treasury and audit reports
- setting contributions
- adoption of the budget
- approval of reports and accounts
- the election of the members of the Committee and the Auditors
- individual proposals.

ARTICLE 13 COMPOSITION OF THE COMMITTEE

The Committee consists of at least 3 members elected by the General Meeting. The term of office is 2 years, and members are eligible for re-election.

It meets as often the Association's business requires.

ARTICLE 14 INDEMNIFICATION OF THE COMMITTEE

Committee members act on a voluntary basis and are only entitled to compensation their actual expenses. Any attendance fees paid may not exceed those paid to official committees. For activities that go beyond the normal scope of their duties, each Committee member may receive appropriate compensation.

ARTICLE 15 POWERS OF THE COMMITTEE

The Committee is authorised to take all actions relating to the purpose of the Association. It (has) (the)widest powers to manage day-to-day business.

The Committee is responsible for

- To take the necessary measures to achieve the goals set
- Calling ordinary and extraordinary general meetings
- to take decisions on the admission and (resignation)(of) (members,) as well as)any exclusion
- To ensure the Articles of Association are applied, to draw up regulations and to administer the Association's assets.
- To represent the Association in dealings with third parties.
- To incur current expenditure within the scope of the Association's purpose

Committee decisions are taken by majority vote. In the event of a tie, the Chairman has the casting vote.

ARTICLE 16 COMMITMENT OF ASSOCIATION

The Association is validly bound by the individual signature of the President or the Treasurer.

ARTICLE 17 CONFIDENTIALITY

Members shall ensure that they do not divulge any information - of any kind whatsoever - which may be detrimental to the achievement of the Association's aims and projects. In particular, members undertake to keep confidential all information relating to the projects of other members of which they become aware within the framework of the Association.

Members are subject to a duty of confidentiality.

ARTICLE 18 FINANCIAL YEAR

The financial year begins on 1 January and ends on 31 December of each year.

The Association's treasurer is responsible for managing the accounts, which are audited each year by the auditor(s) appointed by the General Meeting.

ARTICLE 19 DISSOLUTION

In the event of the dissolution of the Association, the available assets will be entirely allocated to an institution pursuing an aim of public interest similar to that of the Association and benefiting tax exemption. Under no circumstances may the assets be returned to the founders or members, nor may they be used for their benefit in whole or in part and in any manner whatsoever.

These Articles of Association were adopted by General Meeting held on 20 March 2018 in Céligny
On behalf of the association:

The Chairman
Alain Pipoz



Secretary
Danièle Zuercher





Namasté Gumda Switzerland Non-profit-making association recognised as being in the public interest

Project to build two toilet blocks at Lapubesi secondary school

Appendix 2

Application for funding from school management and the municipality of Darche 7



SHREE PRABHAT KIRAN SECONDARY SCHOOL

Dharce RM 7, Lapubeshi GO"Kha

Est : 2045

Code No. : 360380003

Bank A/C No. : 21135508000188

Pan Number : 201340206

Contact No. : 9846478566

Reference No. : 2080 20811

Dispatch No. : 83

Gandaki province

Date : 2080 202 12 12

Chairperson (Director).

Namaste Gumda Switzerland

Subject: Construction for well furnish washroom.

Respected sir,

I would like to inform you that Dharce rural municipality ward 7, Shree Prabhat Kiran secondary school building is under construction on the collision of Gandaki province government and Dharce Rural Municipality Government as a concept of Mega School. But due to the lack of budget, construction of school compound wall and furnish washroom for schools children and teacher staffs has not been constructed. As you know that school children will face the problem of washroom. The premises of school environment will be polluted. It affects the health of the students. So we request to support by allocating budget for constructing well furnish washroom for girls and boys separately. One block for girls with 5 washroom including kids and physically disabled children whereas another block is for boys with 5 washroom including kids and physically disabled children.

I hope your organization will support our school allocating budget for constructing furnish washroom, we shall be grateful to you and your organization for your support.

Looking forward to a positive response.

Thanking You,


Headteacher

Chairman of SMC



Office
Dharce, Gorkha
2073

--Chairman of ward


पन्थर बुरुड
कार्यालय वडा अध्यक्ष



Dharche Rural Municipality

7 No. W@'1 Office

Lapu, Gorkha
Lapu, Gorkha



Letter No. : २०८१/०८२

Dispatch No. :- २१०

Date: 13th Jan 2025

Subject : abo t construction of toilet room.

To chairperson

Nainaste Grunda Organization

Su'itzerland,

Dear sir/madain,

This is certify that Gorkha district Dharche Rural I iunicipality ward no. 07 the construction planning under the Namaste Clumda OrgAnization Switzerland from Shree Prabhat Kiran Secondary School building is under Construction on Gandaki Province government and local government as a concept of mega school. But due to the lack of budget construction of school furnish washroom for school children and teacher staffs has not been constructed. As you know that school children will fac'e the problem of washroom. So, we request to support by allocating; budget for constriction well furnish washroom for girls and boys sepatly. One block for girls with five washroom including kids and physically disable children which is very necessary to construct.

Thanking you!

...Rakesh.....

Rakesh ('ti'ilii;i

\Varil eli:iirni:ui

iiskeslt Gutung
Werd Chairman

Website :- www.dharchemun.gov.np

E-mail :- rmdharche@gmail.com / lapuofficial@gmail.com

" मन्त्र. सरक्षित. समष्ट धार्चे "



Namasté Gumda Switzerland Non-profit-making association recognised as being in the public interest

Project to build two toilet blocks at Lapubesi secondary school

Appendix 3

Quote

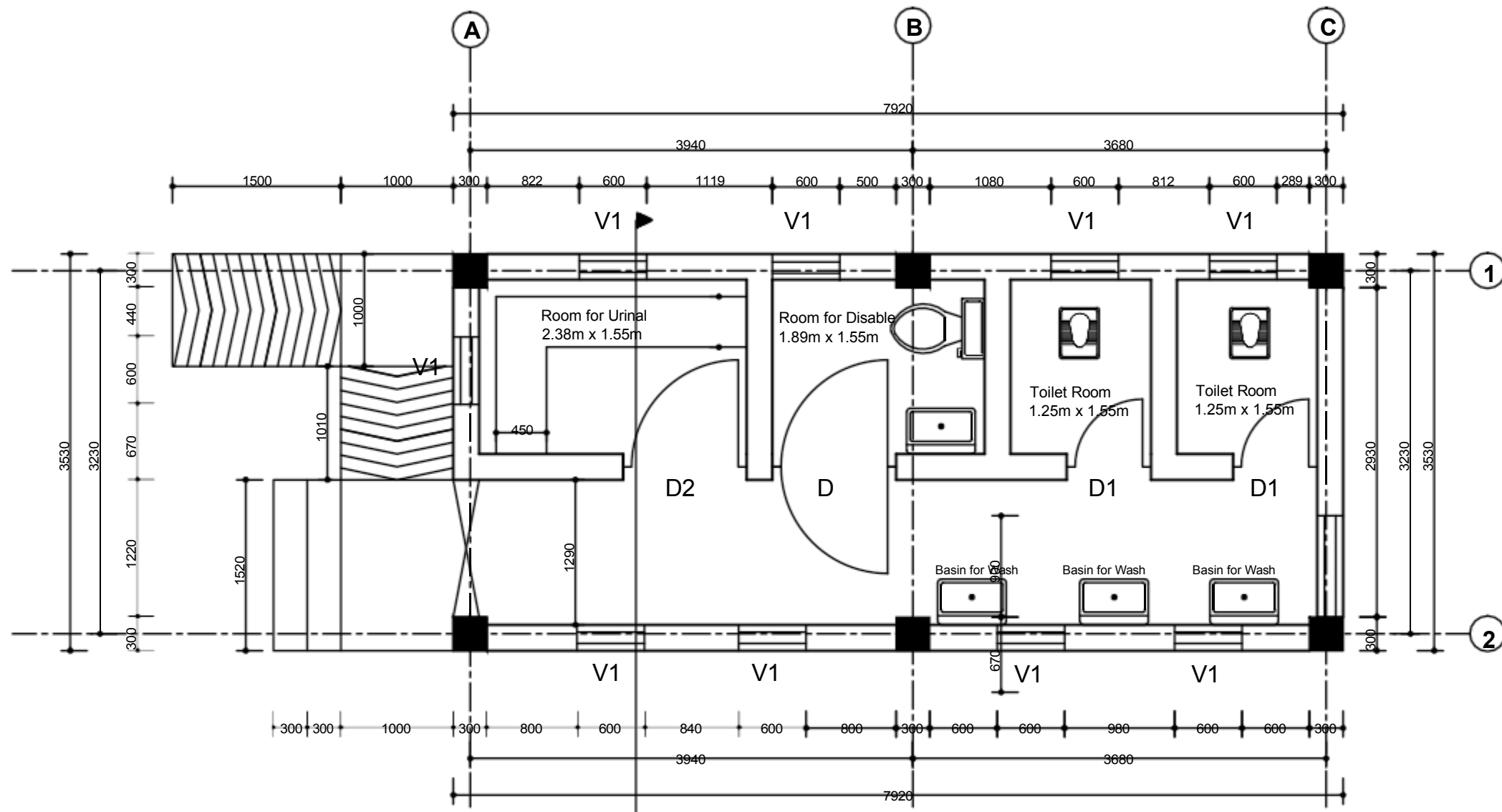


Namasté Gumda Switzerland Non-profit association recognised as being in the public interest

Project to build two toilet blocks at Lapubesi secondary school

Appendix 4

Plans



Floor Plan (Boys' Toilet)
27.95 Sqm

Prabhat Kiran Secondary School

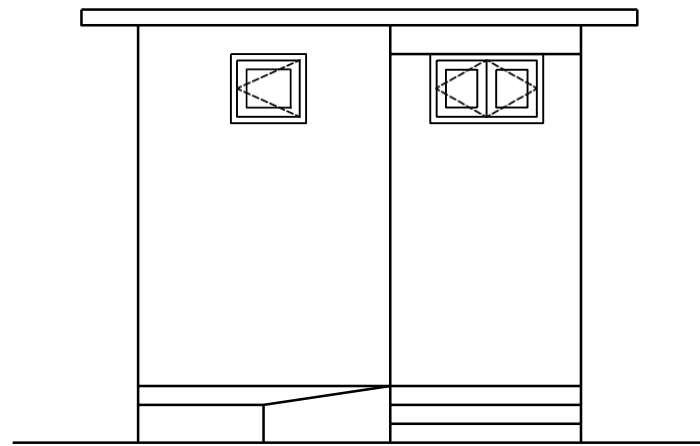
GEDSI-friendly Toilet

Block Floor Plan

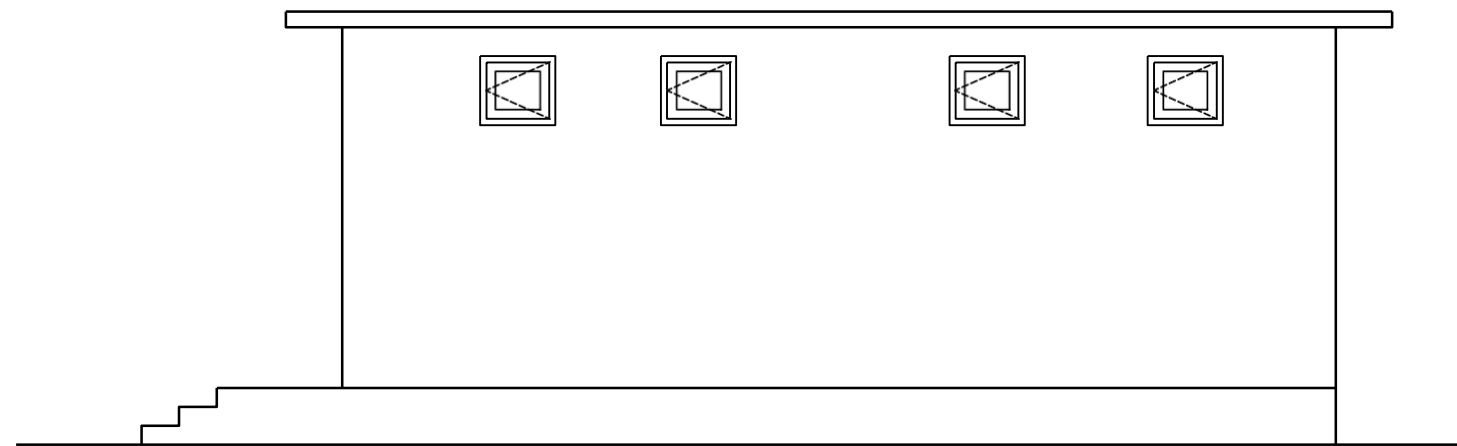
Project:

Proposed Toilet Block for Boys

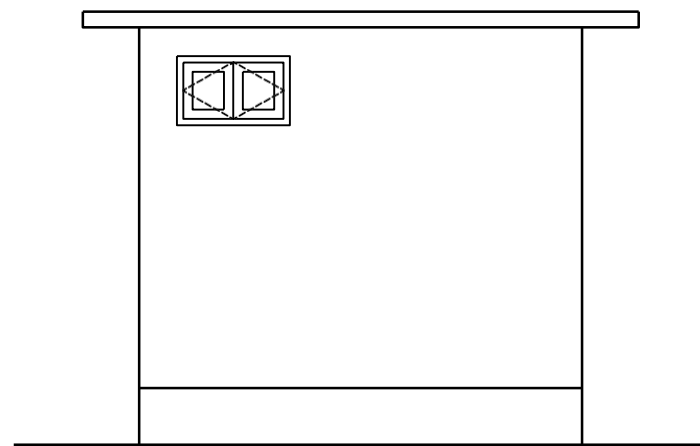
Drawing No.
B/1



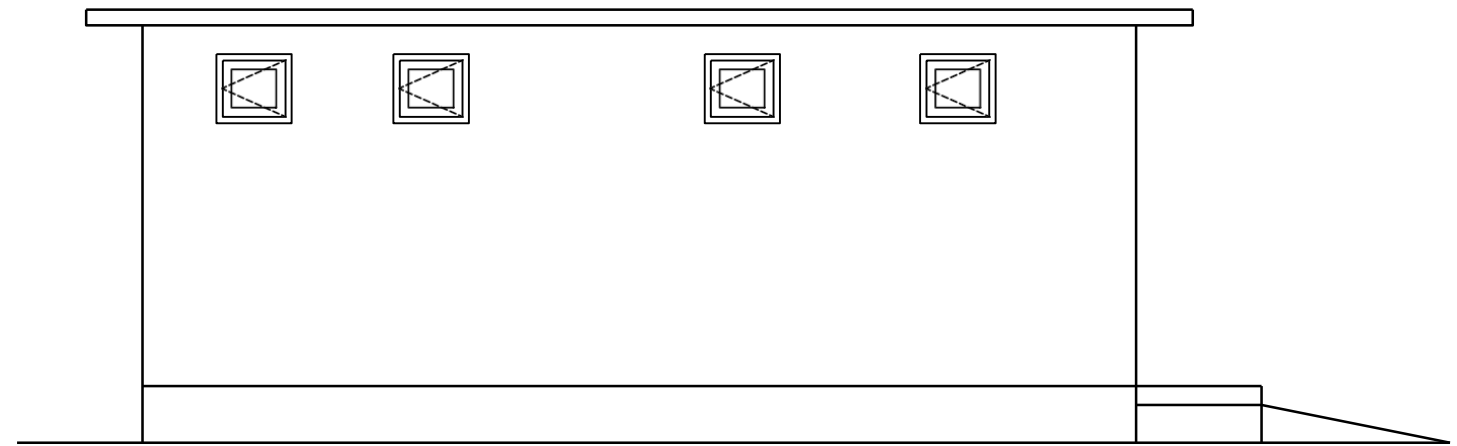
Front Elevation



Side Elevation



Back Elevation



Side Elevation

Prabhat Kiran Secondary School

GEDSI-friendly Toilet Block

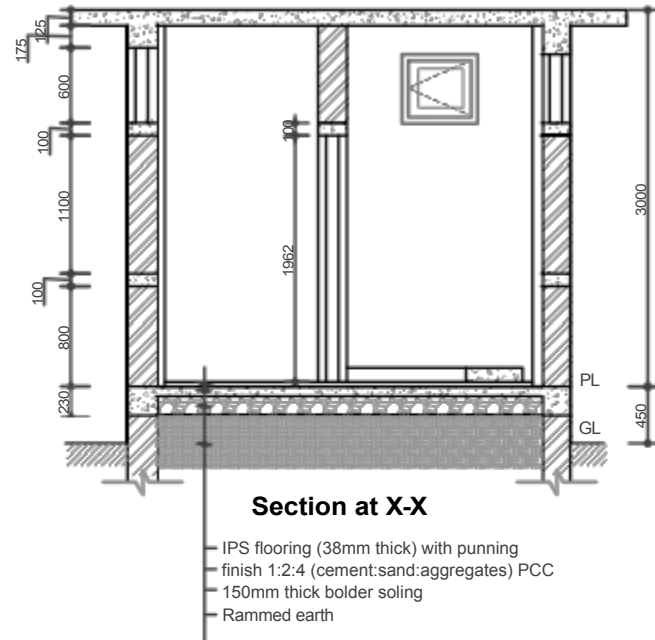
Elevation Views

Project:

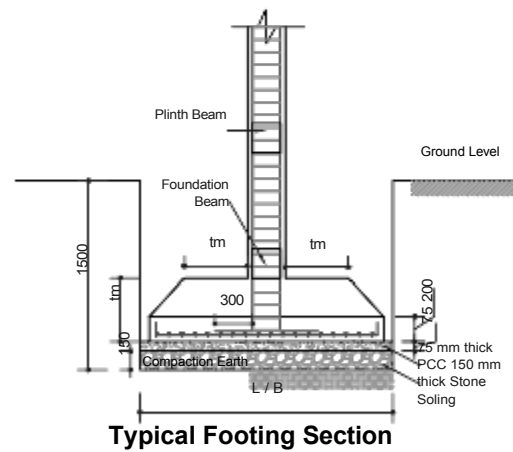
Proposed Toilet Block for Boys

Drawing No.

B/2



Pad Foundation Size for Soft Soil (SBC 100 KN/m²) As per NBC 205: 2012			
Column Type	Foundation Plan L x B (m)	Maximum Thickness tm (mm)	Reinf. Each Way As
Corner	1.5 x 1.5 (F2)	300	12Ø @ 150mm c/c
Face	1.65 x 1.65 (F1)	300	12Ø @ 150mm c/c



Beam / Column Section			
Foundation Beam	Plinth Beam	First Floor Beam	Typical Column Section
3-12Ø TH	3-12Ø TH	3-16Ø TH	300
Stirrups in Beam: 8mm Ø @ 150mm c/c	Stirrups in Beam: 8mm Ø @ 150mm c/c	Stirrups in Beam: 8mm Ø @ 100mm c/c	Ties for Column: 8mm Ø @ 100mm c/c

Prabhat Kiran Secondary School

GEDSI-friendly Toilet Block

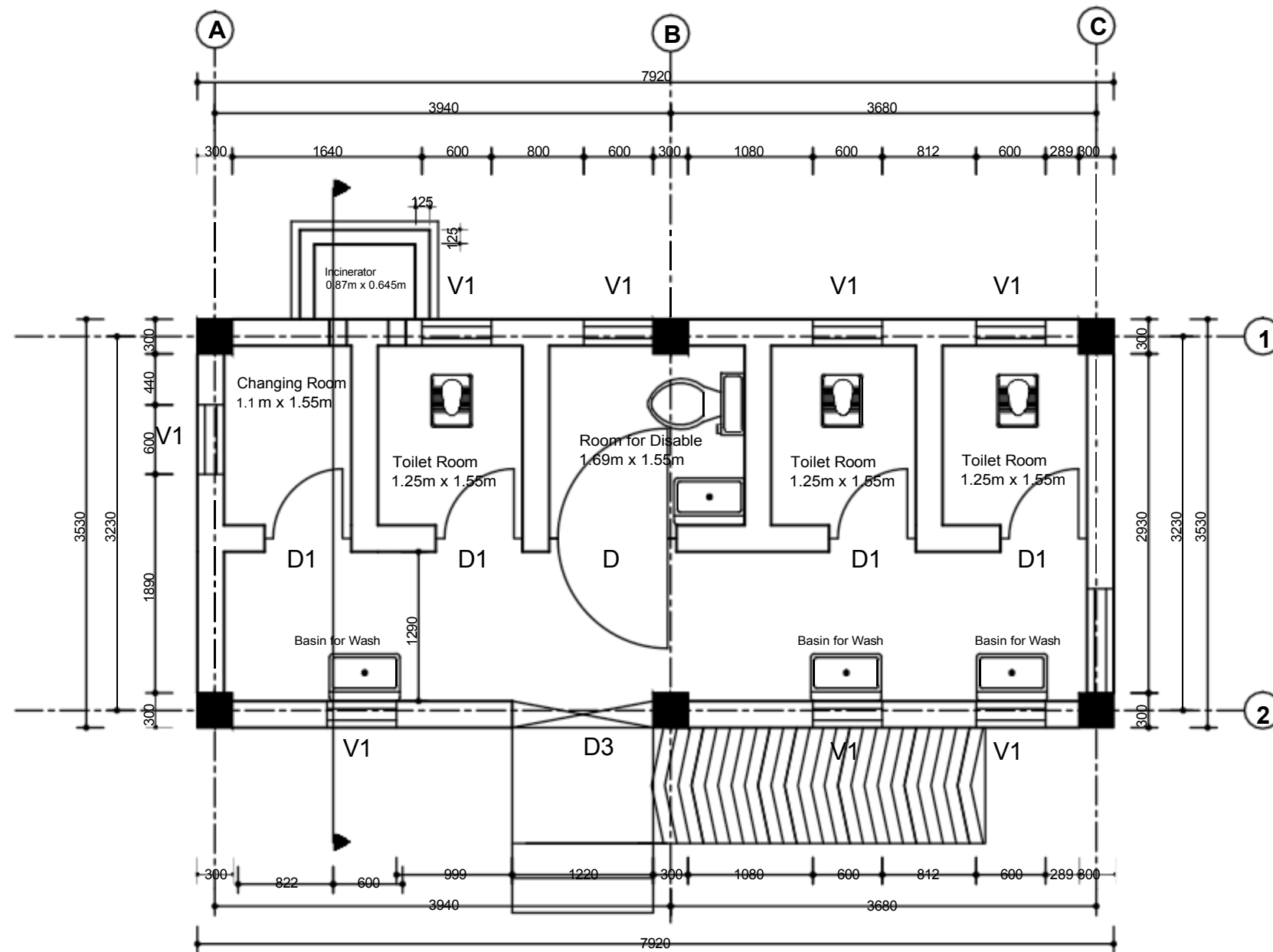
Section View and Detailings

Project

Proposed Toilet Block

Drawing No.

B/3



Floor Plan (Girls' Toilet)
27.95 Sqm

Prabhat Kiran Secondary School

GEDSI-friendly Toilet

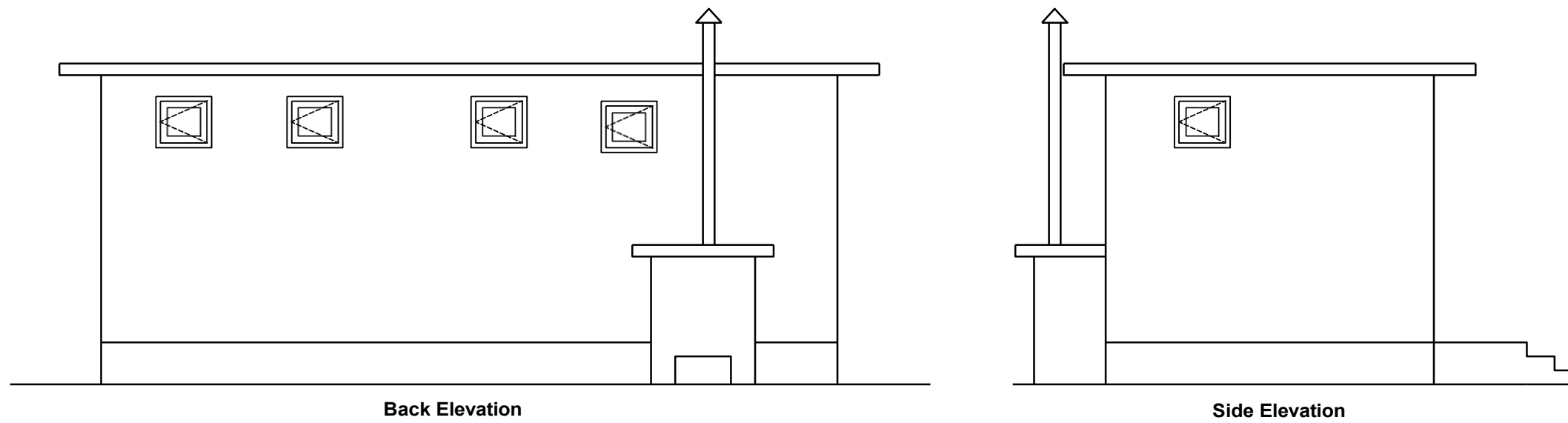
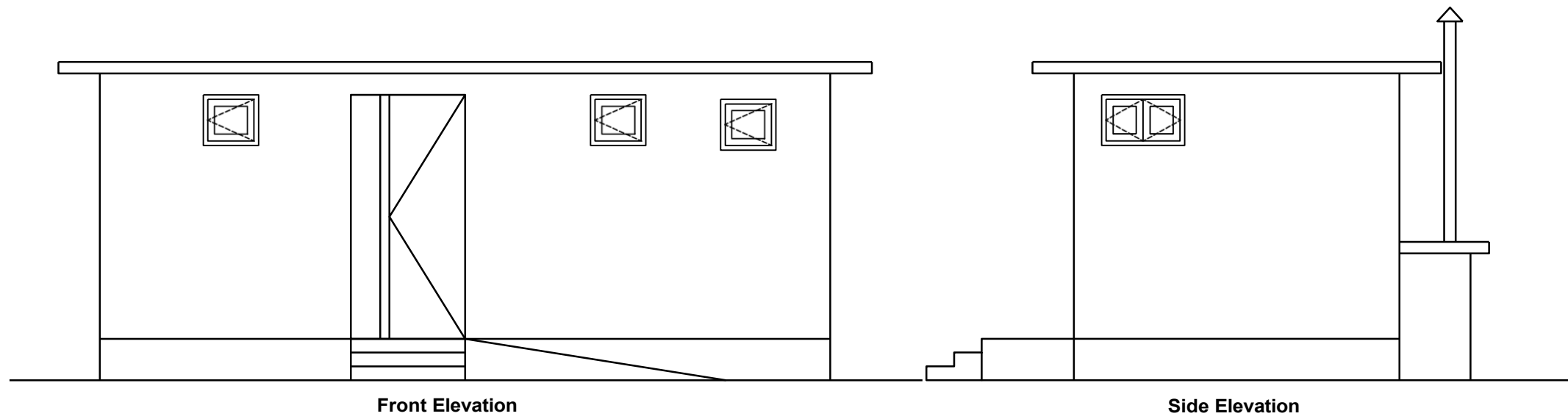
Block Floor Plan

Project:

Proposed Toilet Block for Girls

Drawing No.

G/1



Prabhat Kiran Secondary School

GEDSI-friendly Toilet Block

Elevation Views

Project:

Proposed Toilet Block for Girls

Drawing No.

G/2